

Pipeline Safety in Agricultural Areas



Know what's below.
Call before you dig.

It takes years to make a farm
successful.

It takes just one call to keep it safe.



**Know what's below.
Call before you dig.**

Kern River's public awareness line: 1-866-415-6165
Kern River's 24-hour emergency number: 1-800-272-4817



**Know what's below.
Call before you dig.**

Agricultural Excavations

- Why focus on agricultural excavations?
 - To keep workers, family, friends and the community safe
- Calling in a locate request protects you from injuries and prevents
 - damages to utilities
 - service interruptions to your community
 - potential fines
 - repair costs



Know what's below.
Call before you dig.

Pipelines and Utilities

- Below are typical pipeline markers



Know what's below.
Call before you dig.

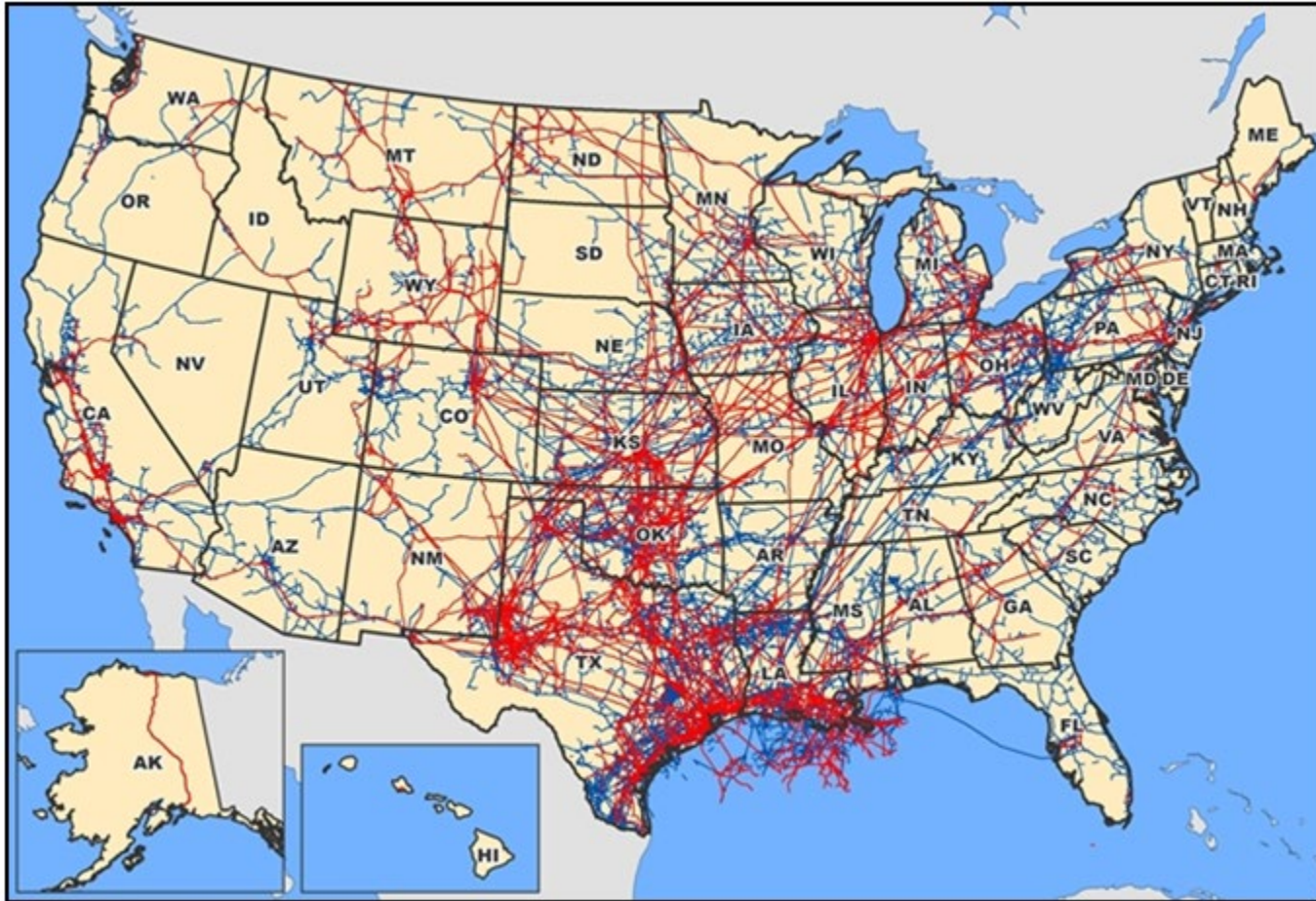
Pipeline Incident Prevention

- Many pipeline companies conduct aerial patrols to help spot excavations taking place near a pipeline



Know what's below.
Call before you dig.

Where Are The Pipelines?



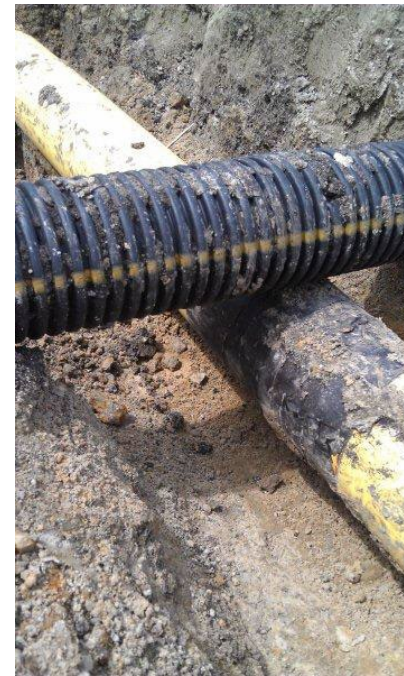
Where Are The Pipelines?

- The map on the previous slide shows only high-pressure pipelines
- Always looks for indication of underground facilities, such as
 - Pipeline markers
 - Utility markers
 - Electric transformers
 - Aboveground gas facilities
 - Utility pedestals



Partnerships and Prevention

- Partnerships and communication can prevent minor damage or tragedy
- Even damaging the protective coating on a pipeline can cause serious incidents at a later date by concentrating corrosion in the area of the damaged coating
- Puncturing a pipeline can have immediate catastrophic results



Know what's below.
Call before you dig.

Aerial View of Agricultural Excavations



Aerial View of Agricultural Excavations



Aerial View of Agricultural Excavations



Well drilling



Know what's below.
Call before you dig.

Aerial View of Agricultural Excavations



Creek stabilization



Know what's below.
Call before you dig.

Aerial View of Agricultural Excavations



Trash pit



Know what's below.
Call before you dig.

Aerial View of Agricultural Excavations



Removing tree lines and fence lines to gain additional ground



Know what's below.
Call before you dig.

Possible Results of Failing to Call 811

- Any of the previous agricultural excavation examples could result in devastation if a one-call notification is not made
- Call the pipeline company if you suspect even minor damage
- Allow for inspection and repairs, if needed
- Even a small disturbance to pipeline integrity can cause future concerns
- Don't take the chance of damaging important facilities your community relies on every day, including power lines, fiber optic lines, telephone lines and water lines



Know what's below.
Call before you dig.

Call 811 – It's the Law!

1. Call 811 at least two business days before every digging project – it's easy, free and required by law
 - Calling protects you from injuries and prevents damages to utilities, service interruptions to your community, and potential fines and repair costs
2. Wait for each utility to mark their underground facilities
3. Respect and protect the facility markings
 - Facility markings are approximate. Stay in close contact with the facility owner, as they may require their company personnel to be on-site during excavation work.
4. Always dig with care
 - A Kern River representative must be on-site during any excavation on our right of way, and hand-digging is required within 24 inches of the pipeline



Know what's below.
Call before you dig.

Uniform Color Code

- After your request is received by the one-call agency, it will notify the utility company to mark their facilities
- Utility companies will mark their facilities with flags, paint or other markings, which are color coded for their specific utility category

PROPOSED EXCAVATION	White: Pre-marking of the outer limits of the proposed excavation or marking the centerline and width of proposed lineal installations of buried facilities.
TEMP SURVEY MARKINGS	Pink: Temporary Survey Markings.
ELECTRIC	Red: Electric power lines, cables or conduit, and lighting cables.
GAS - OIL - STEAM	Yellow: Gas, oil, steam, petroleum, or other hazardous liquid or gaseous materials.
COMMUNICATION CATV	Orange: Communications, cable TV, alarm or signal lines, cables or conduits.
WATER	Blue: Water, irrigation, and slurry lines.
RECLAIMED WATER	Purple: Slurry and reclaimed.
SEWER	Green: Sewers, drainage facilities or other drain lines.



Know what's below.
Call before you dig.

Stay Safe

1. Natural gas transmission pipeline incidents tend to be low-frequency, high-consequence events
2. Do not assume that your contractor made the one-call request
3. Do not assume that the area is clear of pipelines and utilities based on previous locates or memory
4. Do not assume the depth of the pipeline, as erosion can change the depth
5. Do not assume that the pipeline runs in a straight line between markers



Stay Safe

5. Do not assume that the pipeline marker is directly over the top of a pipeline
6. Do not assume that hired hands, new tenants or temporary workforce know about the pipeline
7. Do not assume that an existing one-call request will cover a change in plans
8. Do not assume that farmers and ranchers are exempt from requesting a locate



Know what's below.
Call before you dig.

General Safety Awareness

Other actions to consider

- Be cautious when operating machinery near aboveground natural gas facilities
- Do not burn brush piles over or near a pipeline or allow “controlled burns” to travel toward a pipeline or aboveground pipeline facility
- Certain areas of the country may have very specific concerns, such as forestry, cotton, vegetables, sugar cane, tree farms, or other specialized crops and processes



Know what's below.
Call before you dig.

Right of Way Restrictions

- Contact the pipeline operator before any excavation on the right of way, including
 - Planting trees or shrubs in the right of way
 - Constructing grain bins, maintenance sheds, silos, confinements or other structures in the right of way
- The pipeline operator will work with you to place these items so that they do not impede proper maintenance of the pipeline



Know what's below.
Call before you dig.

How to Recognize a Natural Gas Leak

Sight:

- Discolored or abnormally dry soil or vegetation
- Bubbling in wet or flooded areas
- Blowing dirt
- Dead or discolored plants in an otherwise healthy area
- Exposed pipe caused by floods or earth movement

Sound:

- Quiet hissing to loud roar, depending on leak size

Smell:

- An unusual smell or petroleum odor
- A rotten egg odor (mercaptin) – but not in all cases



Know what's below.
Call before you dig.

How React to a Natural Gas Leak

- Leave the area immediately on foot
 - Move uphill, upwind and upstream
- Abandon equipment being used
 - Do not attempt to move machinery
- Eliminate other sources of ignition nearby if safe to do so
 - Cellphone, running equipment or machinery
- Keep others away
- Do not attempt to stop blowing gas
- Call 911 and the pipeline operator from a safe location



Know what's below.
Call before you dig.

In the Event of a Leak

Pipeline companies will

- Dispatch employees and emergency equipment
- Stop or reduce gas flow
 - Either remotely or at the site
- Work with local emergency responders
 - Evacuations
 - Road blocks
 - Crowd control



Know what's below.
Call before you dig.

Keeping Natural Gas Facilities Safe

- Kern River conducts regular ground and aerial surveillance of our facilities to look for excavations and encroachments
- You can help keep our natural gas pipeline system safe by reporting suspicious activities near our facilities
 - To report suspicious activities or emergencies, contact our 24-hour emergency line
 - 1-800-272-4817
 - For questions about our safety program, contact our public awareness line
 - 1-866-415-6165



Know what's below.
Call before you dig.

Additional Resources

Visit these websites for more information on digging safely

- www.call811.com
- www.commongroundalliance.com



Know what's below.
Call before you dig.

Remember



**Know what's below.
Call before you dig.**



**Know what's below.
Call before you dig.**